



Hannay Reels®

The reel leader.

Hannay Reels, Inc.,
 553 State Route 143
 Westerlo, NY 12193-0159
 Telephone 1-518-797-3791 • Toll Free 1-877-GO-REELS (467-3357)
 FAX 1-800-REELING (733-5464)
 Website: www.hannay.com
 E-mail: reels@hannay.com

TSB 2013.06.002

Troubleshooting Hannay 115V or 230V A.C. Motors

Affected Reels: 115 or 230V AC Powered Reels
 Time Required: 10 min.
 Priority: Upon Failure
 Date Issued: June-2013

Description:

This TSB covers troubleshooting a 115 or 230V electric rewind motor with a Hannay Reels name plate that will not function. The non-functionality of the motor is usually due to miss-wiring. Despite the motors being labeled as AC motors, they are in fact DC motors that have internal rectifiers. Wiring them as AC motors will destroy the rectifier.

Actions Required:

1. Verify that the motor was properly wired according to the supplied wire diagram.

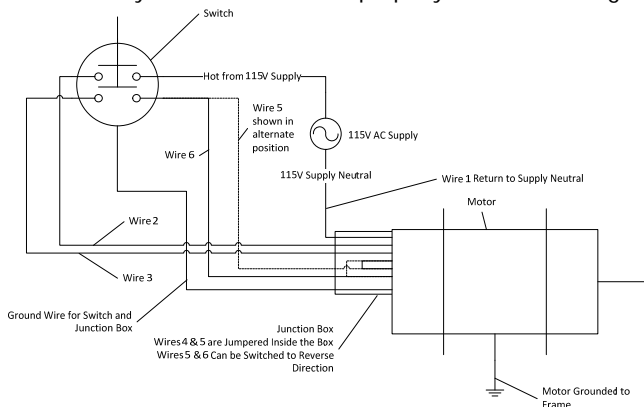


Figure 1 Wire Diagram for 115V Motor

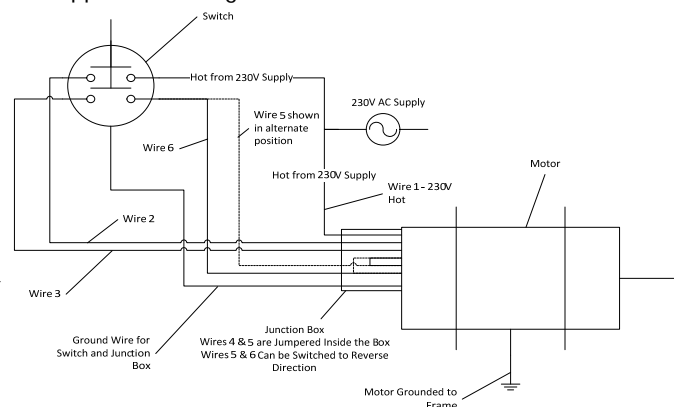


Figure 2 Wire Diagram for 230V Motor

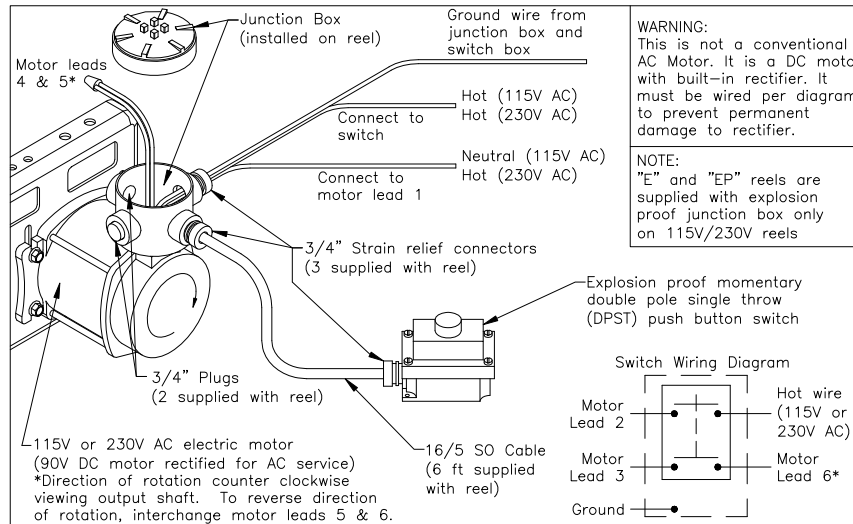


Figure 3 Isometric View Showing Motor and Switch

2. Remove motor from reel and connect wires 5 & 6 to a 12V battery. If the armature and brushes are undamaged the motor should turn very slowly.
3. If motor passes step 2, connect wires 1 & 2 to a 115V supply and check voltage across wires 3 & 4. The voltage should read approximately 90V. If it does not then the internal rectifier has been damaged.
4. If motor passes step 3 then the switch must be checked. Jumper wires 4 & 5 together, 6 & 3 together, connect 1 & 2 to 115V power. If the motor turns, the switch is bad.